

MATRIX™ 802 Series 2

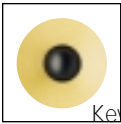
Floor-standing loudspeaker system

Product Summary

- The B&W Matrix 802 Series 2 loudspeaker system incorporates all the high standards of design technology, fine engineering and production methods found in the professional Matrix 801 Series 2
- Matrix technology reduces the coloration so frequently associated with box-type loudspeakers. (Any radiation from the enclosure will add its own character to the relatively neutral and uncoloured sound of the drive units)
- The Matrix improves the detail and depth in the stereo image due to the reduced amount of rear sideways radiation, which, when reflected back to the listener confuses the image.

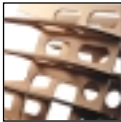
Technical highlights

- Tweeter on top: B&W's Tweeter on top technology ensures that the sound remains focused and time-sensitive and that the stereo-image is presented with unparalleled three dimensional accuracy.

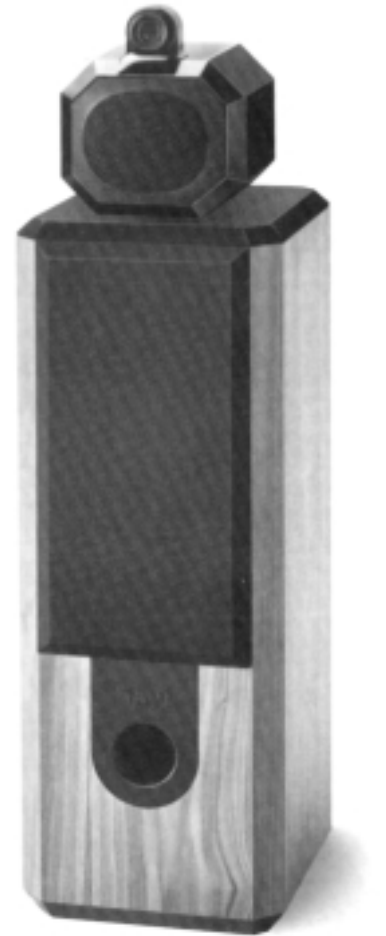


Kevlar®: B&W developed and patented the method of using Kevlar® for loudspeaker cones to reduce unwanted standing waves.

DuPont originally created Kevlar® for use in bulletproof vests.



Matrix: The basic construction of nearly all loudspeakers is exactly the same - panels of wood-based materials, bonded to form a rectangular box. B&W studied and evaluated how each aspect of cabinet behaviour and the efficiency of various materials and construction methods affects sound.



Drive Units	1 x 26mm metal dome - high frequency 1 x 126mm Kevlar® - midrange 2 x 200mm high-power polymer cone bass	Power Handling	50W – 600W
Frequency Response	27Hz – 20kHz ± 2dB on reference axis	Dimensions	Height: 1040mm Width: 300mm Depth: 370mm
Sensitivity	90dB spl(2.83V 1m)	Finish	Black Ash, Walnut, Rosewood, White Grille: Black Cloth
Nominal Impedance	8 ohms (minimum 4 ohms)		



LISTEN AND YOU'LL SEE